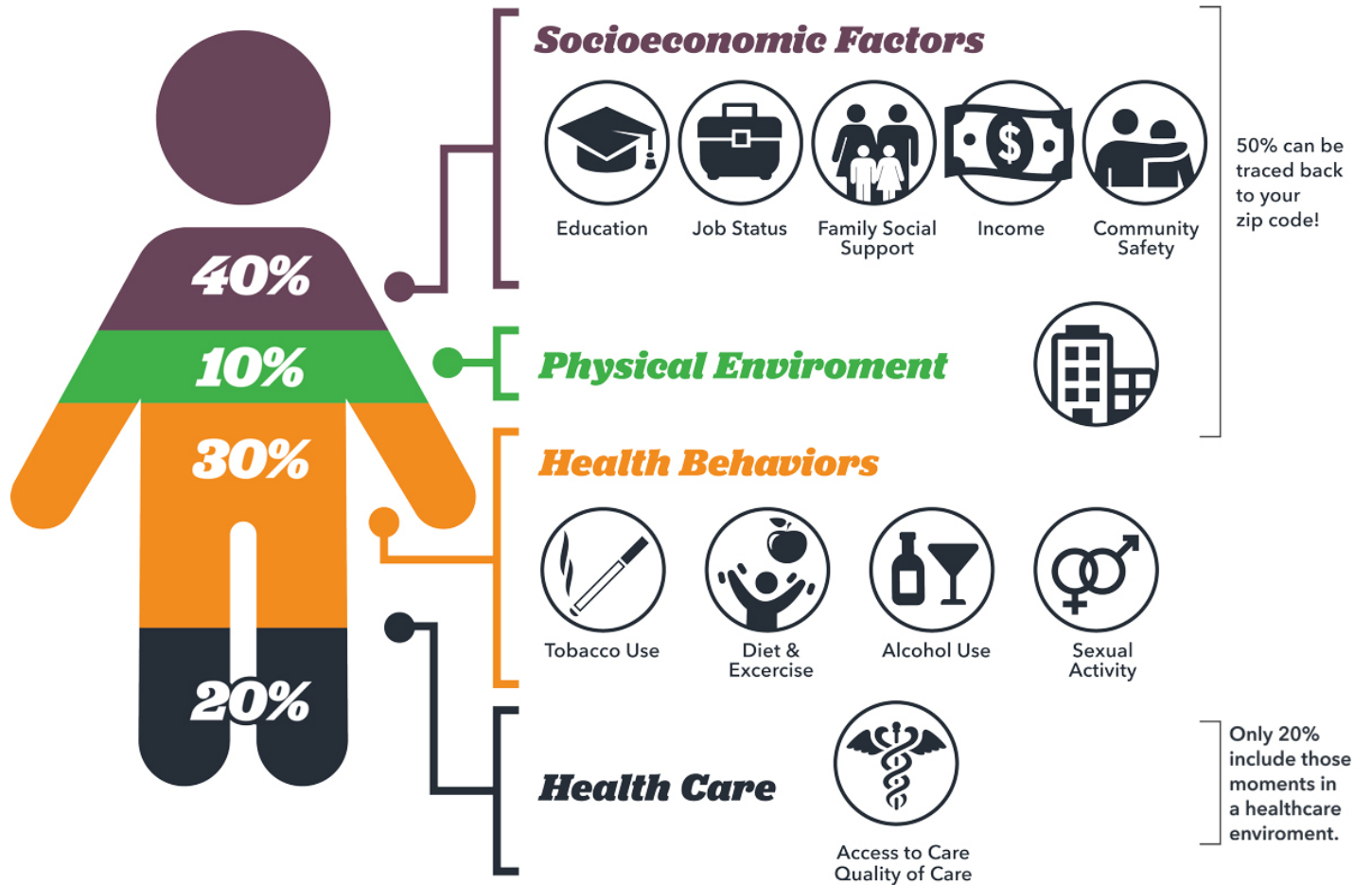




Office of Equity, Diversity & Inclusion Port of Seattle®

What influences health & well being?



Source: Institute for Clinical Systems Improvement, Going Beyond Clinical Walls: Solving Complex Problems (October 2014)


What is an Index?

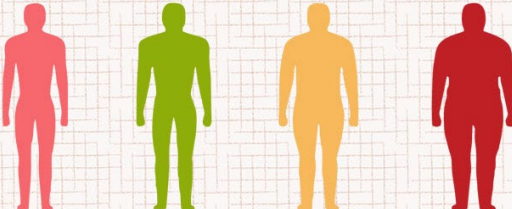
What is Your Body Mass Index (BMI)

Formula

$BMI = \frac{\text{Weight in Kilograms}}{\text{height in meters} \times \text{height in meters}}$

$BMI = \frac{\text{Weight in Lbs} \times 703}{\text{height in inch} \times \text{height in inch}}$





BMI Chart

- BMI less than 18.50 → Underweight
- BMI 18.50 - 24.99 → Healthy weight
- BMI 25.00 - 29.99 → Overweight
- BMI 30 or more → Obese

www.TheHealthScienceJournal.com



The Science of Wind Chill

NO WIND

98.6°F
Average temperature of the human body.

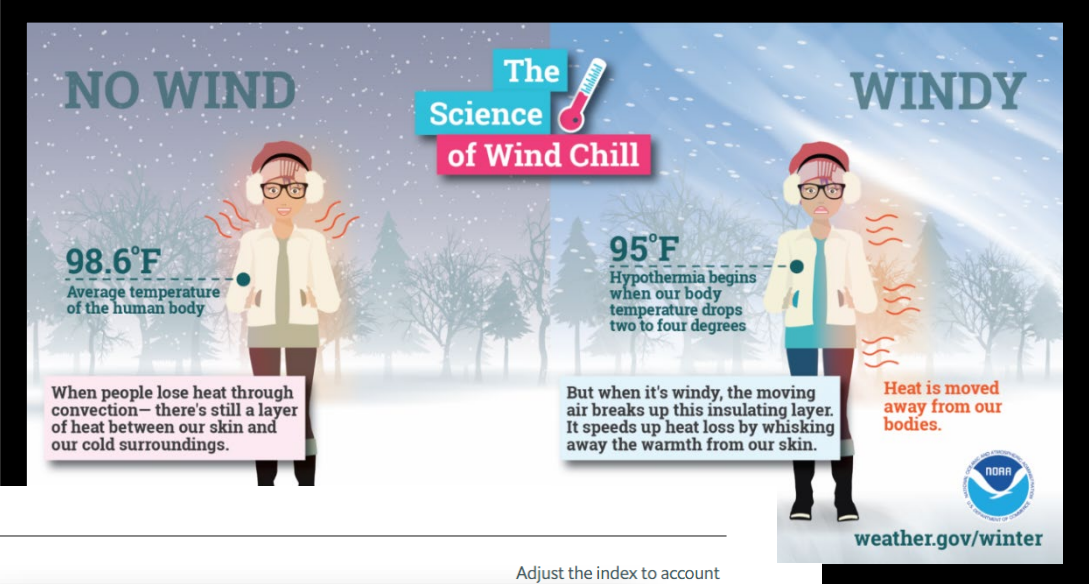
When people lose heat through convection – there's still a layer of heat between our skin and our cold surroundings.


WINDY

95°F
Hypothermia begins when our body temperature drops two to four degrees.

But when it's windy, the moving air breaks up this insulating layer. It speeds up heat loss by whisking away the warmth from our skin.

Heat is moved away from our bodies.




weather.gov/winter

The Big Mac index

Country	2000 — 2018	Under/over valued, %
Switzerland	Franc	18.8
Sweden	Krona	5.8
United States	US\$	BASE CURRENCY
Norway	Krone	-5.2
Canada	C\$	-8.0
Euro area	Euro	-14.1
Denmark	Krone	-14.4
Israel	Shekel	-15.1
Australia	A\$	-18.1
Uruguay	Peso	-18.8
Brazil	Real	-20.1

Choose a base currency Show index at Adjust the index to account for GDP per person



July

20%

Applied rate,

What is an Equity Index

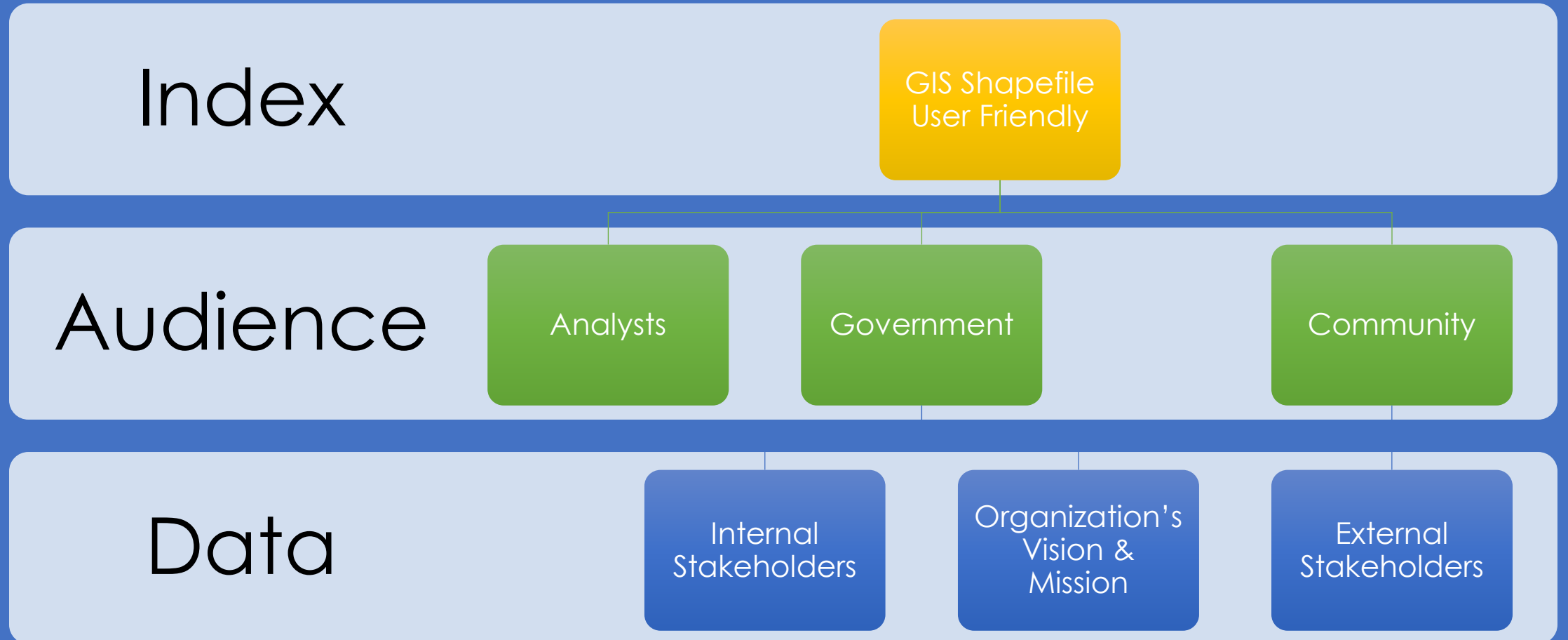
Mapping Tool

Helps leverage
limited
resources

Identifies
Opportunity

**Using Data to
Help Advance
Equity**

Starting Points:



The Do's and Don'ts

Don't
Blame

Do Identify
YOUR Faults

Don't
Shame

**Do Use
Accurate
Data**

Port's Equity Index?

- Aggregated by Census Blocks Groups
- 4 Equally Weighted Determinant Categories
- 21 Indicators
- Racial Demographic Overlay

All sources were authoritative, accurate and reliable data; collected by block group or census tract.

Established all calculations and data within ArcGIS **First**

Categories | Century Agenda | Definitions

Accessibility

Goal #5 Become a model for equity, diversity, and inclusion.

Indicators that are not necessary for survival but advance the standard of living in a community so that people of all abilities can fully access and participate in public life (e.g. proximity to parks and open space, access to healthy food, pedestrian and bike facilities).

Economy

Goal #3 Responsibly invest in the economic growth of the region and all its communities.

Indicators that demonstrate the opportunity for the creation, retention, transfer, and accumulation of wealth within a community for residents, businesses, and community stakeholders (e.g. poverty rate, median household income, educational attainment).

Environment

Goal #4 Be the greenest and most energy efficient port in North America.

Indicators that represent the health of the environment, including human-made impacts and bio-physical elements, and thus the vitality of the community (e.g. diesel emissions, risk of toxic release from facilities, traffic density).

Livability

Goal #6 Be a highly effective public agency.
Objective #18 Partner and engage with external stakeholders to build healthy, safe, and equitable communities.

Indicators that demonstrate a safe and healthy standard of living (e.g. housing cost burden, home ownership rate, transit access).

Methodology

Accessibility

- Proximity to Parks and Open Space
- Access to Healthy Food
- Pedestrian and Bike Facilities
- Internet Access
- Voter Participation

Environmental

- Diesel Emissions and NOx Emissions
- Average Annual PM 2.5
- Risk of Toxic Releases from Facilities
- Traffic density



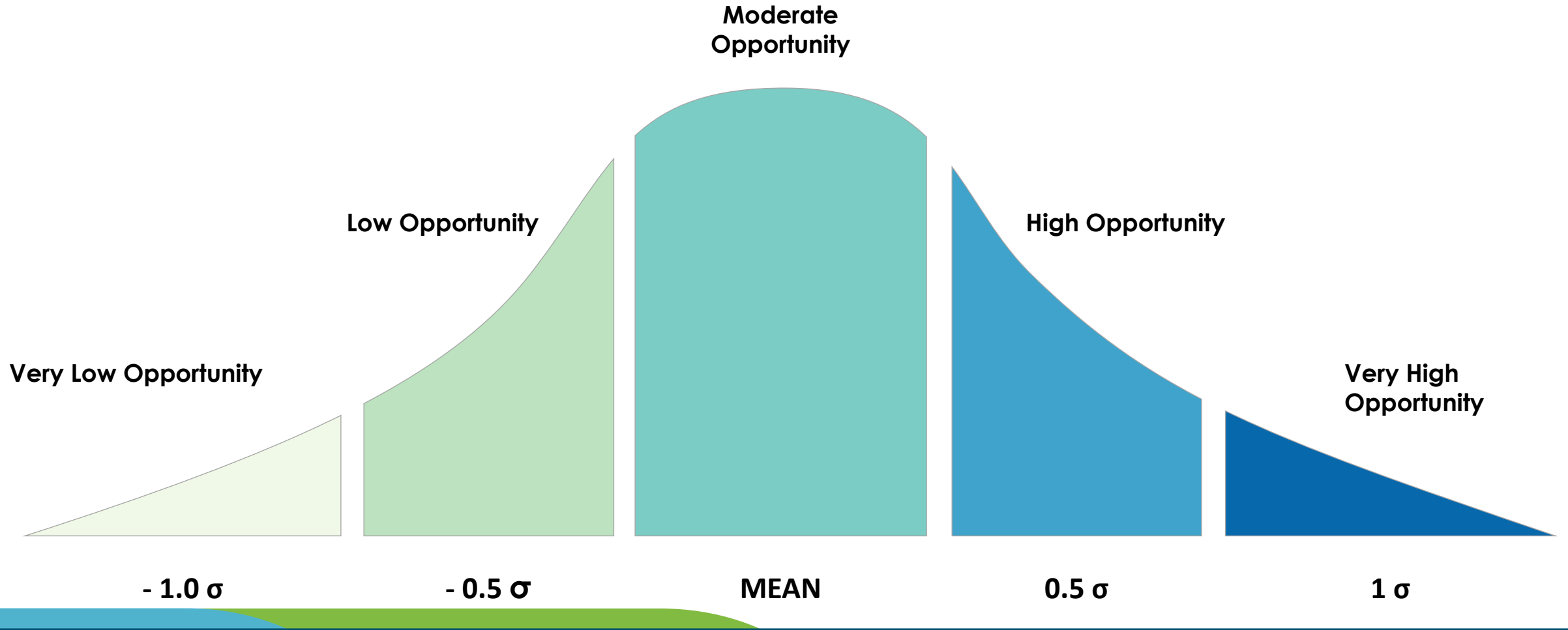
Livability

- Housing Cost Burden
- Transit Access
- Access to Jobs by Transit
- Crime Index
- Life Expectancy
- High School Graduation Rate

Economy

- Poverty Rate
- Unemployment Rate
- Median Household Income
- Educational Attainment
- Job Density

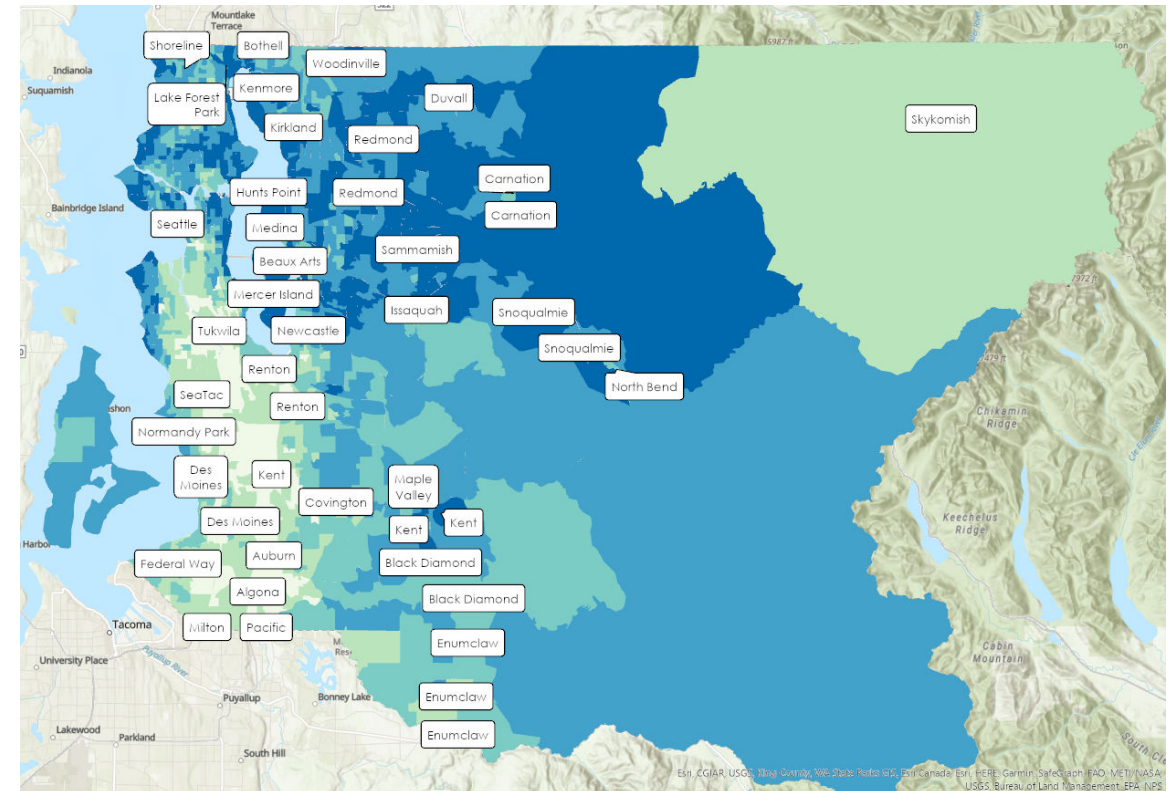
Distribution of Data

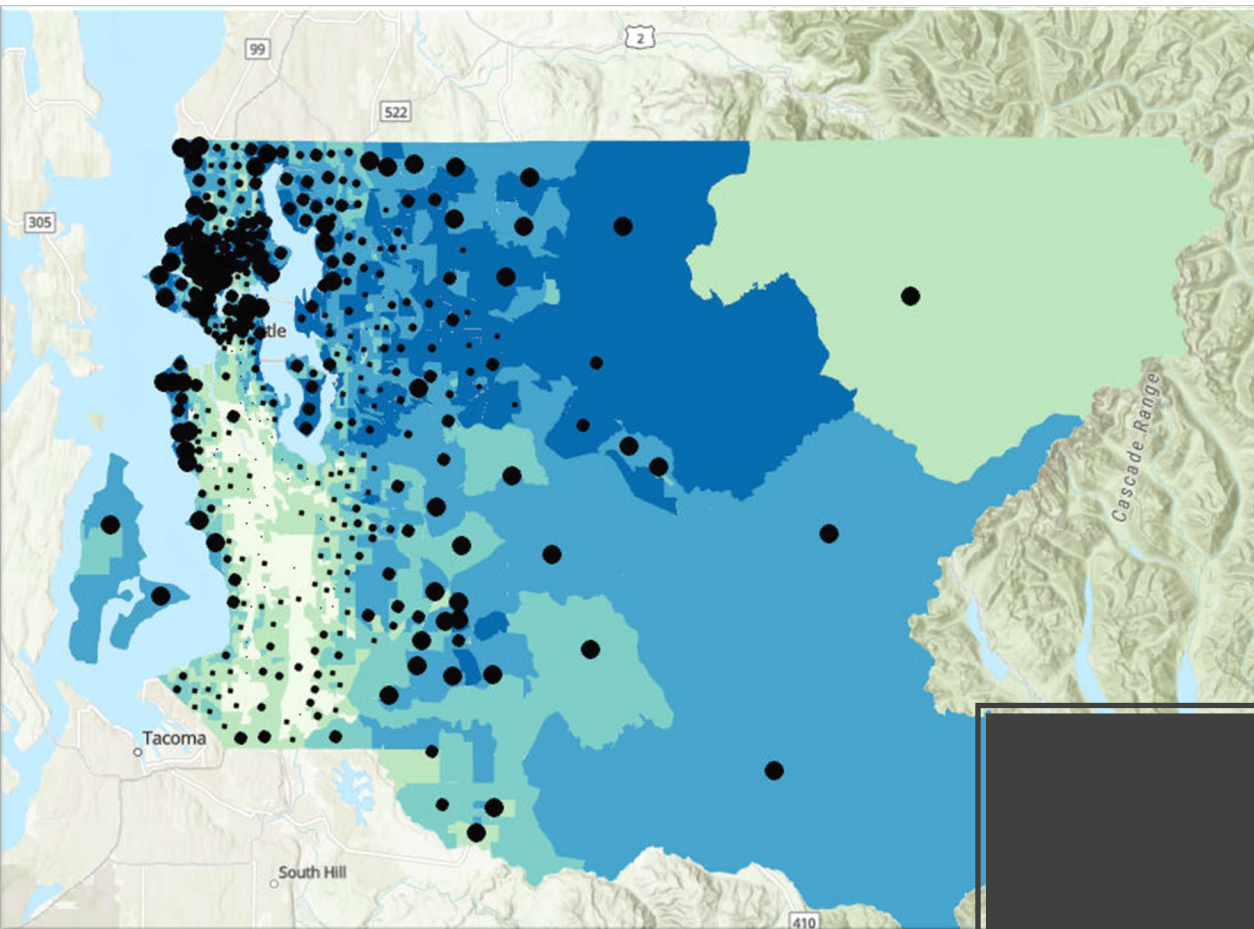


Port Equity Index

Port of Seattle Index

Equity Value





Port of Seattle Index

Equity Value



Race

Percent of Population that is White alone, Non-Hispanic

- 9.1% - 35.9%
- 35.9% - 52.9%
- 52.9% - 66.8%
- 66.8% - 78.1%
- 78.1% - 95.7%

Port Equity Index

Des Moines (Placeholder)

Heavy Traffic

0%

Food Desert

0%

No High School Diploma

9%

Heavy Traffic

71%

Food Desert

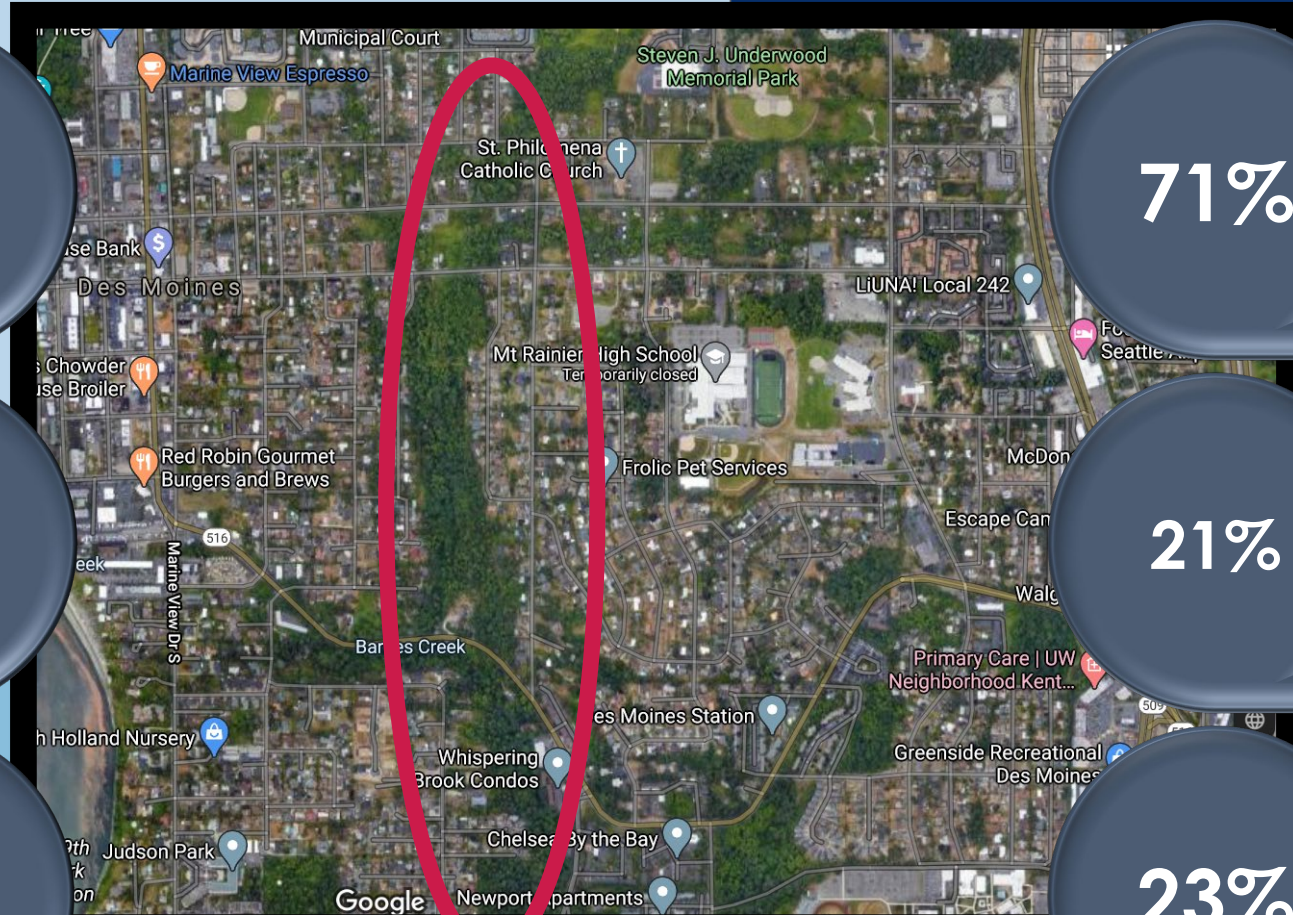
21%

No High School Diploma

23%

48% White Non Hispanic

28% White Non Hispanic



Online Tool

Port of Seattle Equity Index

The Port of Seattle's Equity Index is an interactive map that displays a visual representation of social and environmental disparities in King County. It uses 21 indicators in four categories to determine pollution burden and social inequalities in communities across the region. This index serves as a tool for the Port to integrate equity data into decisions about programs, policies, and resources.

[Explore Map](#)

- Economy**
Indicators related to creation, retention, transfer, and accumulation of wealth within a community
- Livability**
Indicators that demonstrate a safe and healthy standard of living
- Accessibility**
Indicators that advance the standard of living in a community so that people can fully access and participate in public life
- Environment**
Indicators that represent the health and vitality of the environment

cai community attributes, inc.
Data analysis and reporting by Community Attributes, Inc.

King County, Washington

Overall Combined Index Value for the Selection Area:
Equity Index
★★★ Moderate

Population
2.2 m

Disabled
9%

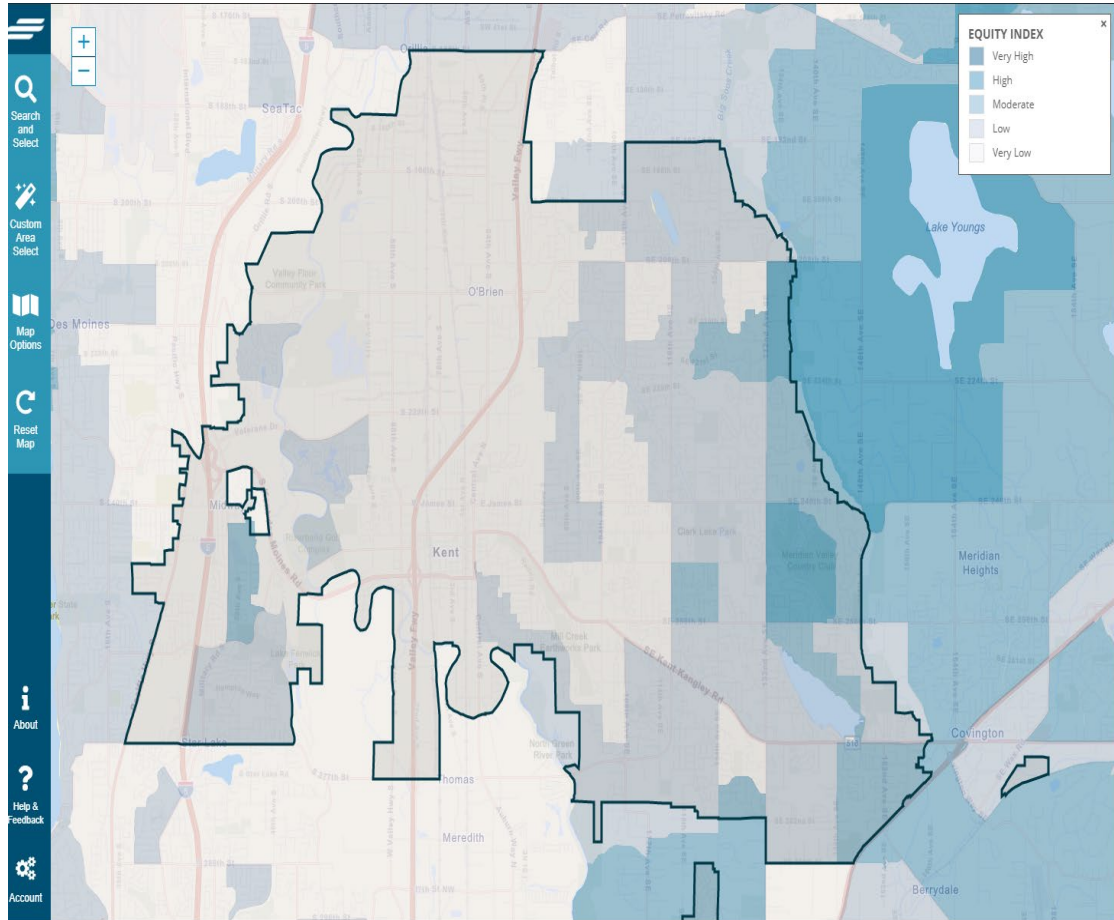
Race & Ethnicity

Asian	10%	205,404
Black	6%	141,790
Native American	1%	15,057
Other	4%	89,377
Pacific Is.	1%	16,948
Two or More Races	6%	140,006
White	54%	1,404,324
Hispanic	10%	212,241
Non-Hispanic	90%	1,983,261

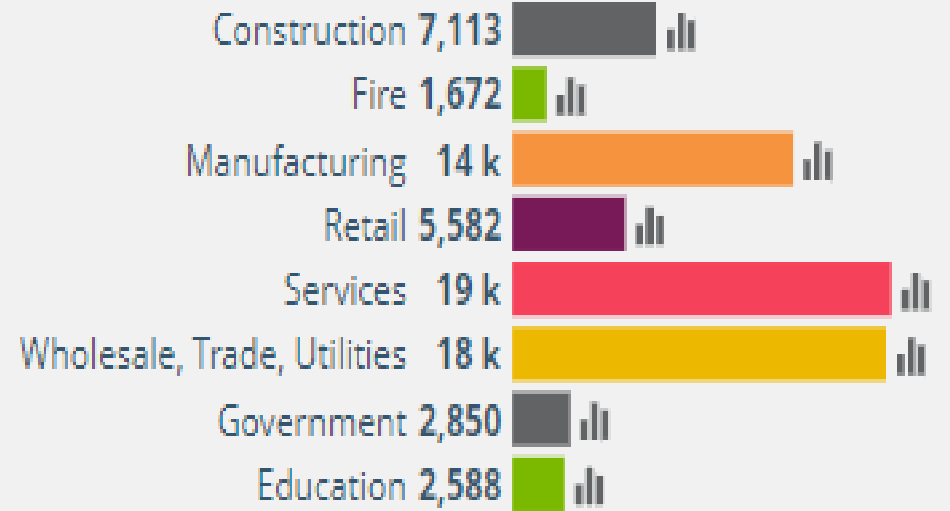
Foreign Pop.
23%

English Language Learners
3%

Sources: US Census Bureau, American Community Survey (ACS) 5-year dataset, 2015-2019.



Estimated Jobs Total



Sources: US Census Bureau, American Community Survey (ACS) 5-year dataset, 2015-2019. PSRC - 2019 Covered Employment Estimates.

City of Kent

Next Steps

Case Studies

Internal
Presentation

External
Presentation

Story Maps

Questions?

Alison Beason
Beason.A@PortSeattle.org

Thank You

Port 
of Seattle[®]